

Tasmania- an International Dark Sky Sanctuary



Our vision

Our vision is for Tasmania to be a world leader in dark sky conservation and awareness. Helping to reduce the impact of light pollution in Tasmania.



Our mission

Advocate for the protection of dark skies through:

1. Education and outreach;
2. The introduction of policy and regulations;
3. Establishment of a 'Dark Sky Sanctuary' within the boundaries of the Tasmanian Wilderness World Heritage Area.

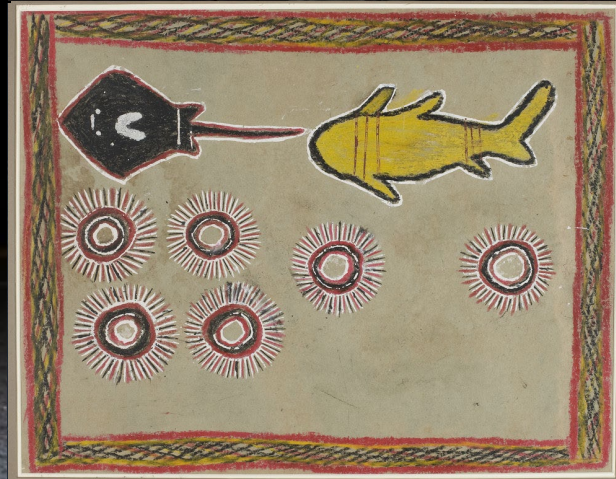
Why we do what we do!

Increase in
greenhouse gas
emissions



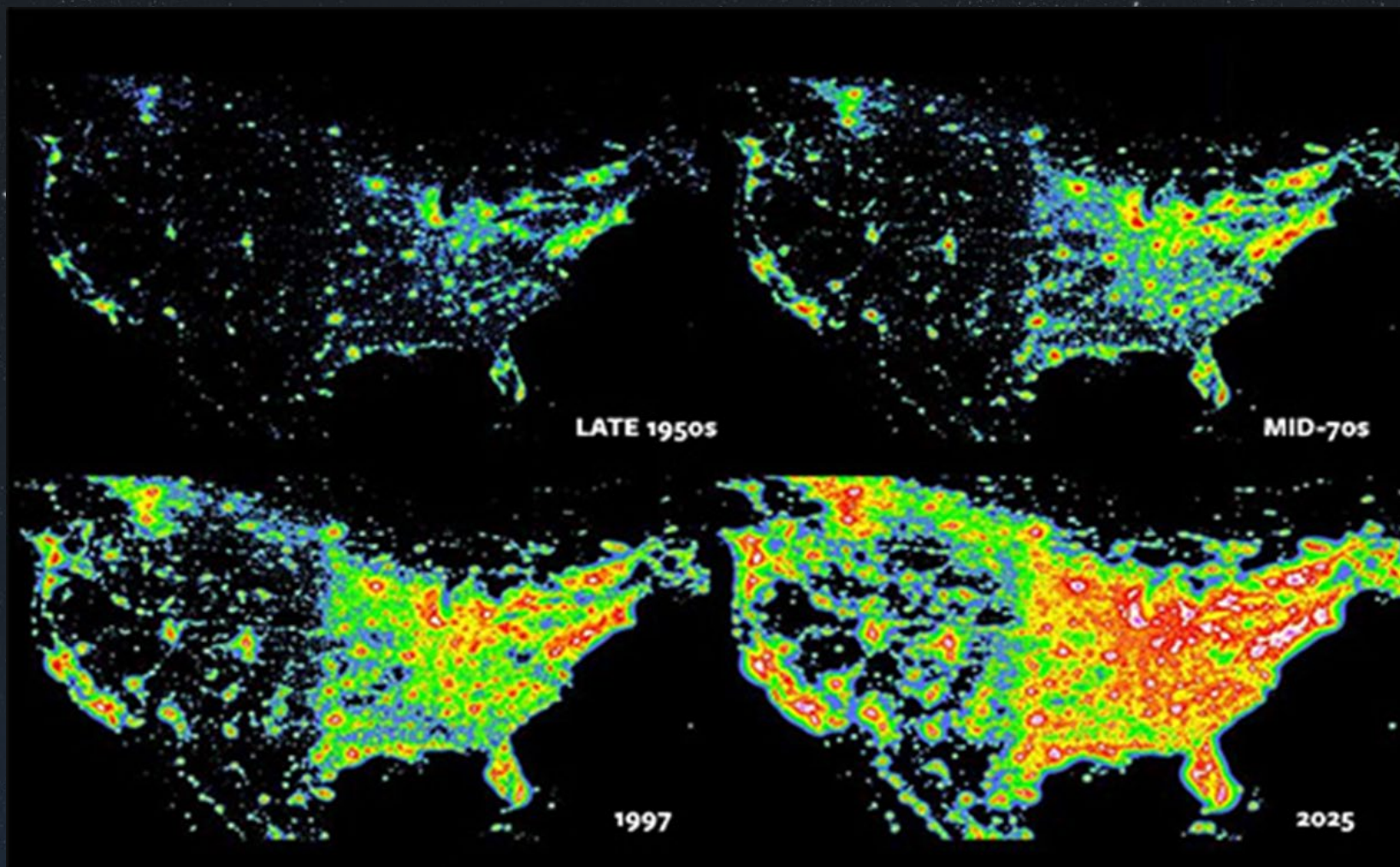
Altering of
biochemical and
circadian rhythms

Endangerment of
wildlife and
ecosystems



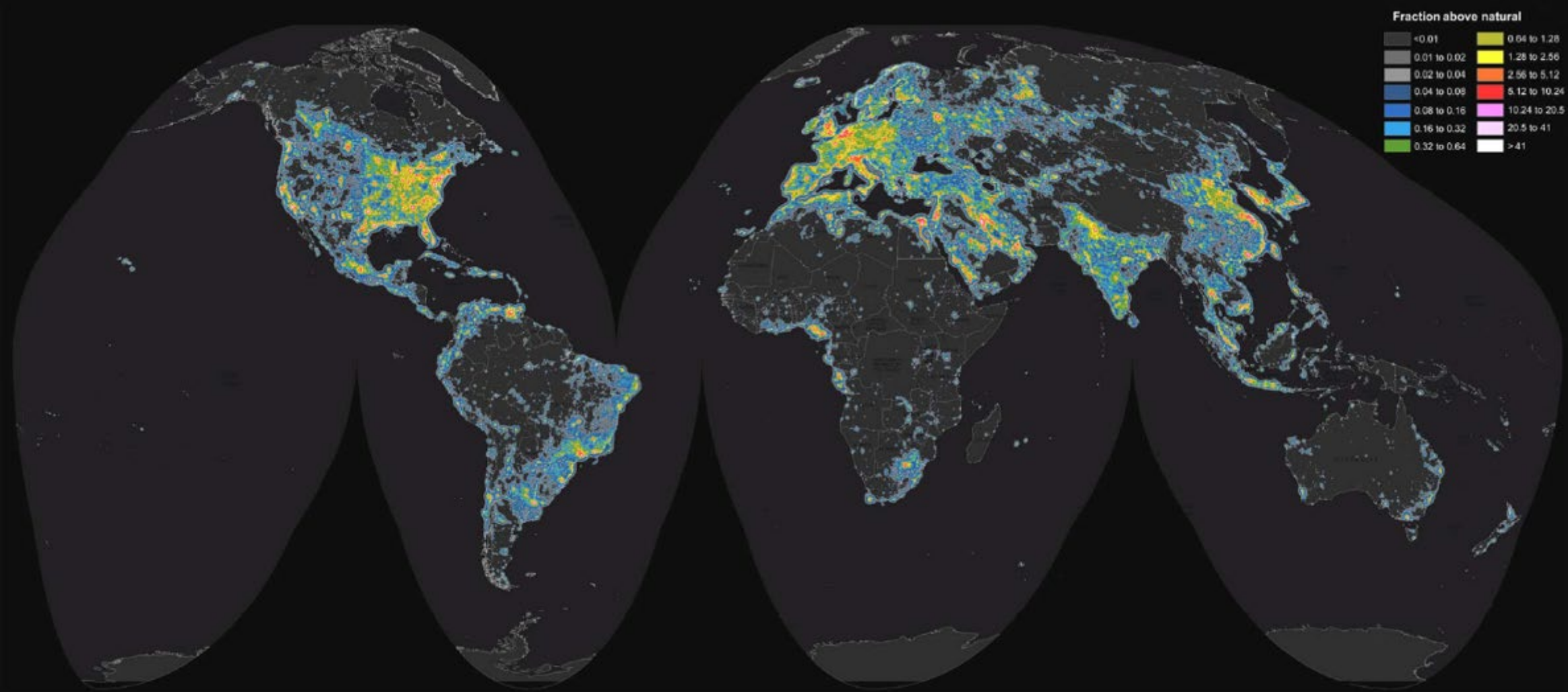
Loss of stars and
connection to
cultural heritage

The opportunity



Light pollution growth above the USA. 99% of the US population no longer have access a stary sky

The opportunity



In a global context, Australasia, and particularly Tasmania, remains relative dark.

Dark sky tourism



Known as Astrotourism.

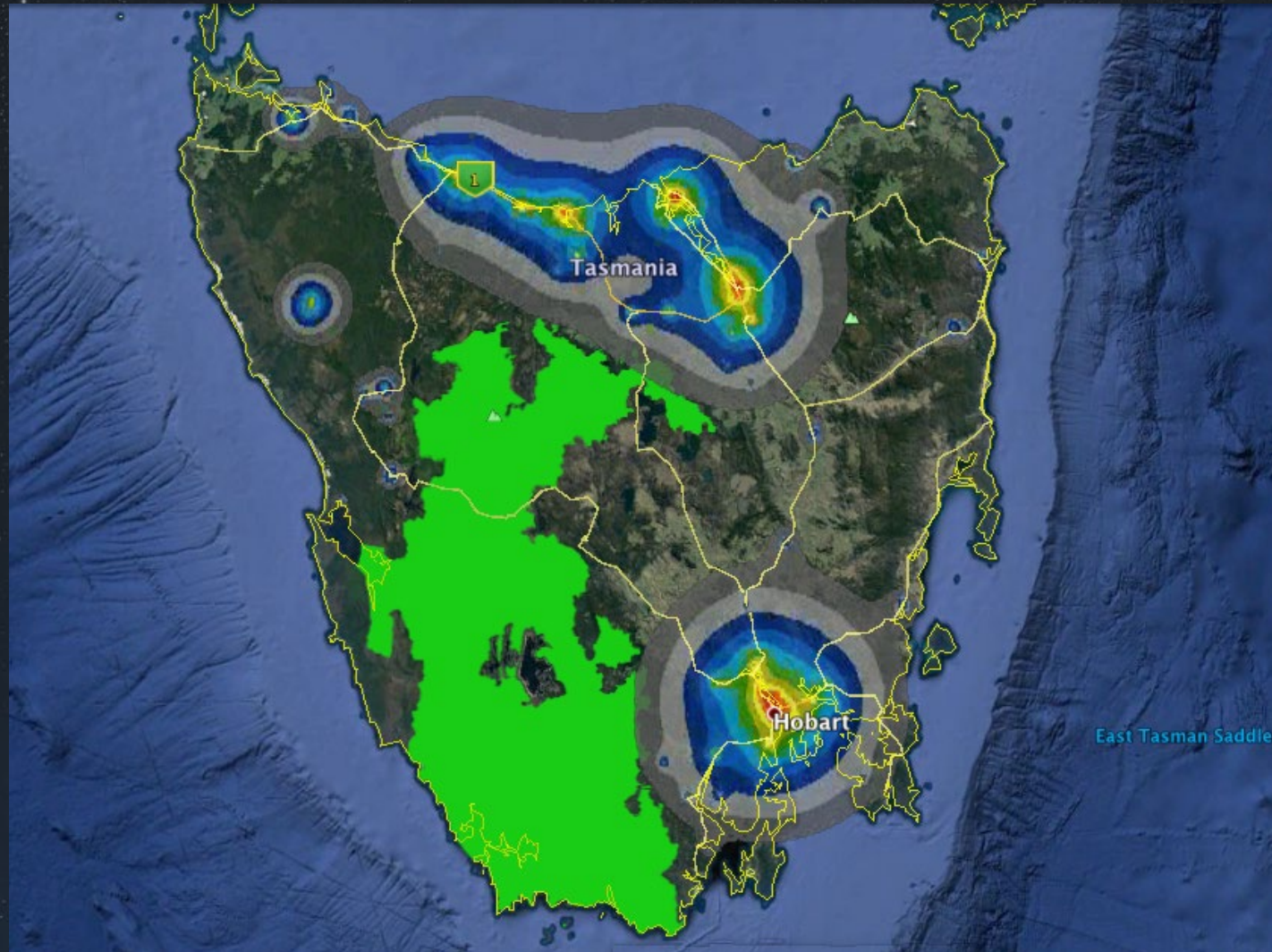
Capitalises on the opportunity to experience pristine, natural night skies where the constellations and cosmic wonders are at their most resplendent.

The risk



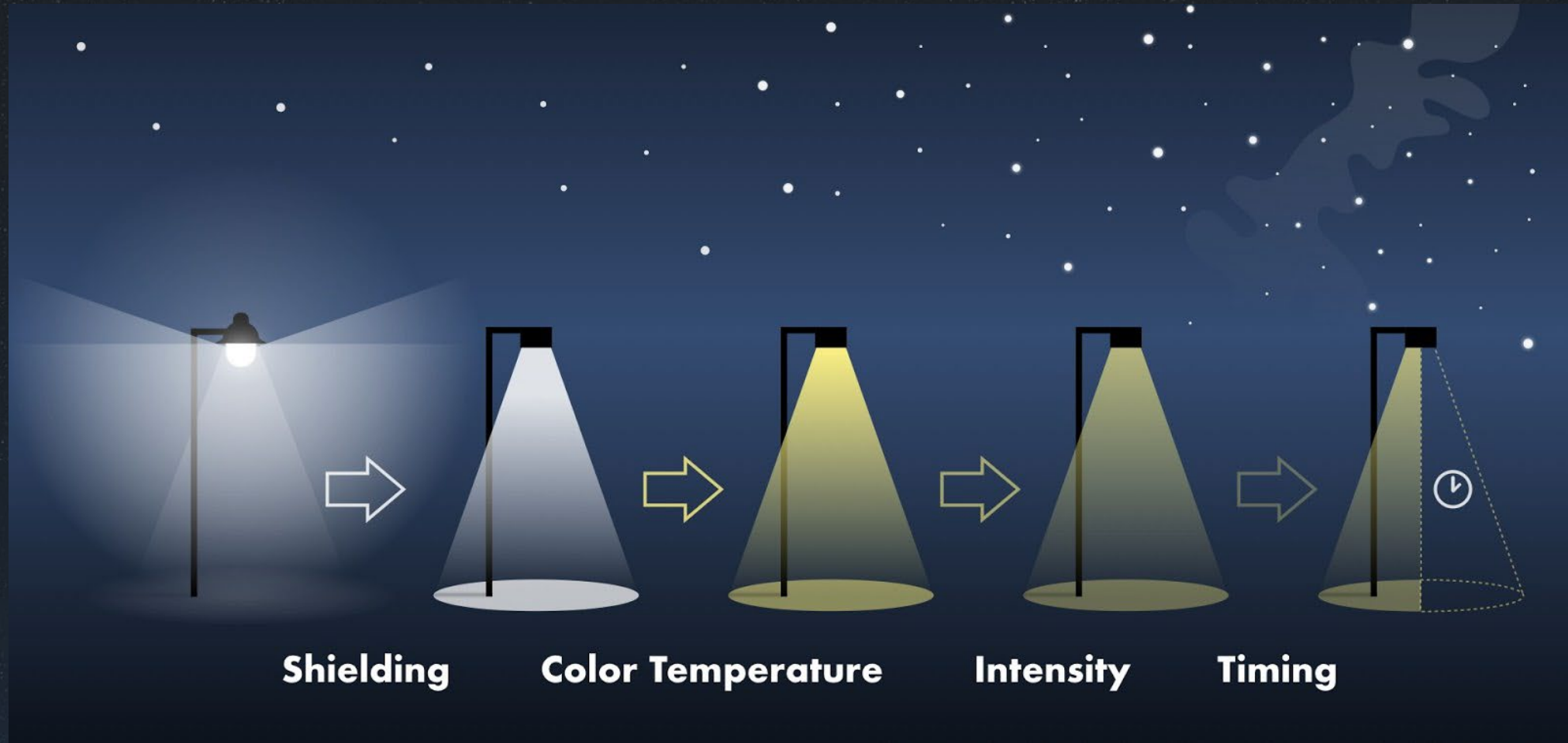
Loss of stars in the EU was tracked at 9.6% per annum over a 10 year period. Sadly, Tasmania is not immune with light pollution also on the rise in our region.

The risk



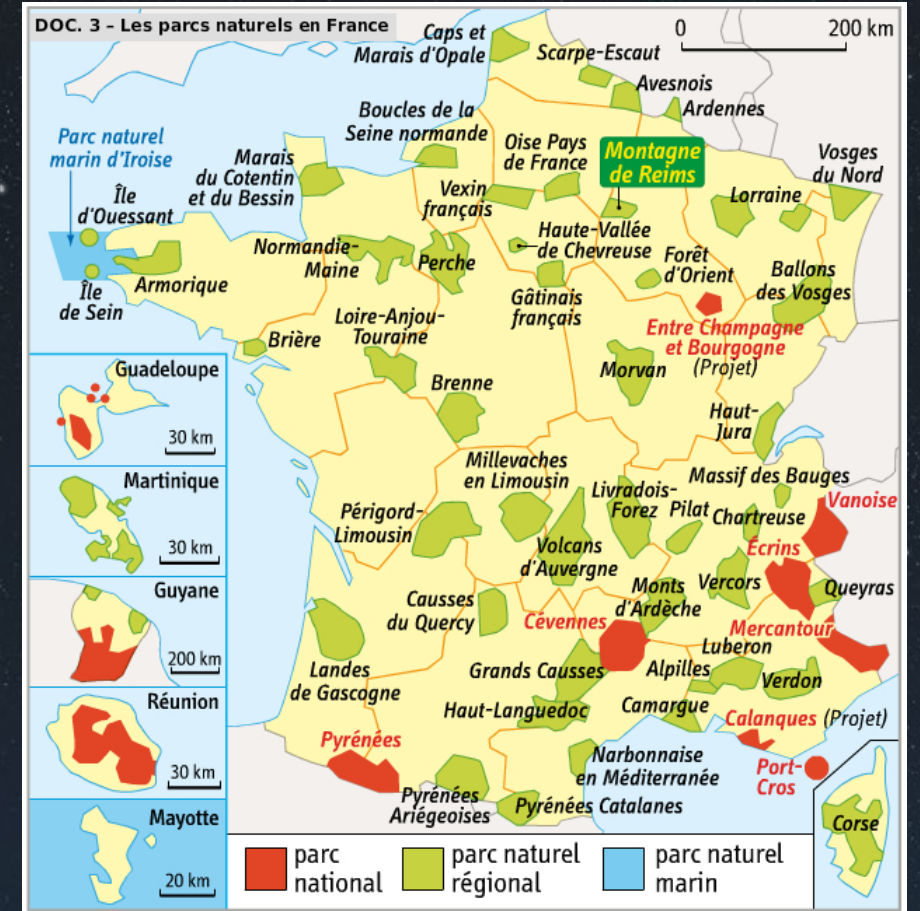
Light pollution from Hobart and Launceston has already reached the edges of the Tasmanian Wilderness World Heritage Area.

The risks are easily mitigated



Light pollution is the easiest of all pollutants to solve. It does not mean no lighting, simply a more considered approach.

The risks are easily mitigated



Countries that have taken steps to address the problem have not only halted the growth of light pollution but, in many cases, have started to reverse it.

How do we capitalise on Astrotourism?



Tasmania already has an Astrotourism industry that has grown organically over the years.



Tasmania: A dark sky sanctuary



A dark sky sanctuary is a designation under the International Dark Sky Places Program, founded in 2001 by DarkSky International.

It aims to preserve and protect dark sites through responsible lighting polices and public education.

Tasmania: A dark sky sanctuary

- The program offers six types of designations
- Sanctuaries displaying the most outstanding dark sky values, often in remote locations.
- Program is closely based on the UNESCO World Heritage Sites Program.
- Sanctuaries are highly sought out by astrotourists.

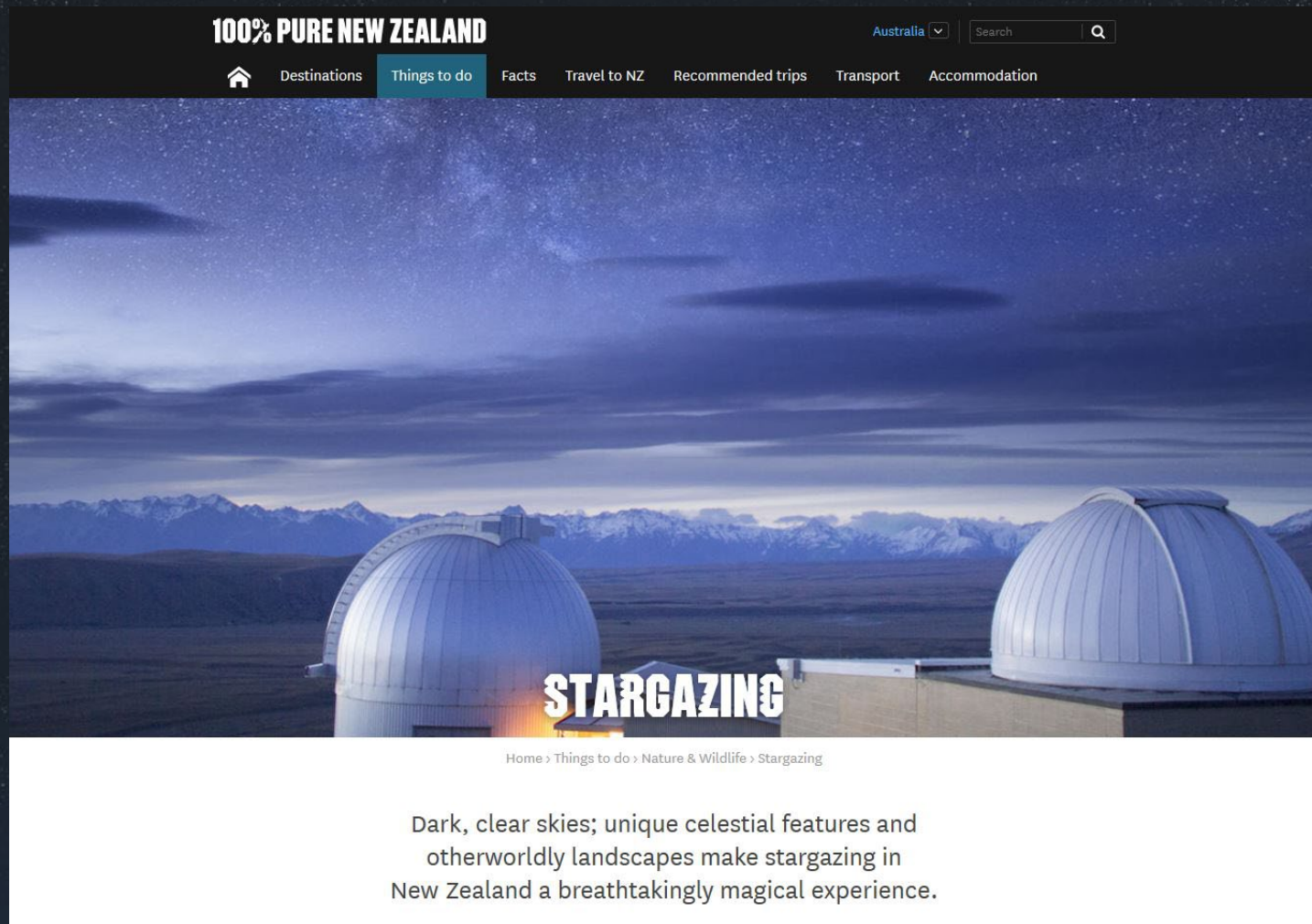


Why Astrotourism?

- Represents one of the most sustainable forms of tourism, requiring minimal infrastructural development and causing little environmental disruption (Che, 2016).
- Encourage overnight stays in rural areas, contributing significantly to local economies (Moss et al., 2014).
- Can boost visitor numbers, especially during off-peak seasons, given that stargazing in winter is often preferred due to longer periods of darkness and the visibility of certain celestial events (Falchi et al., 2016).



We know it works



100% PURE NEW ZEALAND Australia

Home Destinations **Things to do** Facts Travel to NZ Recommended trips Transport Accommodation

STARGAZING

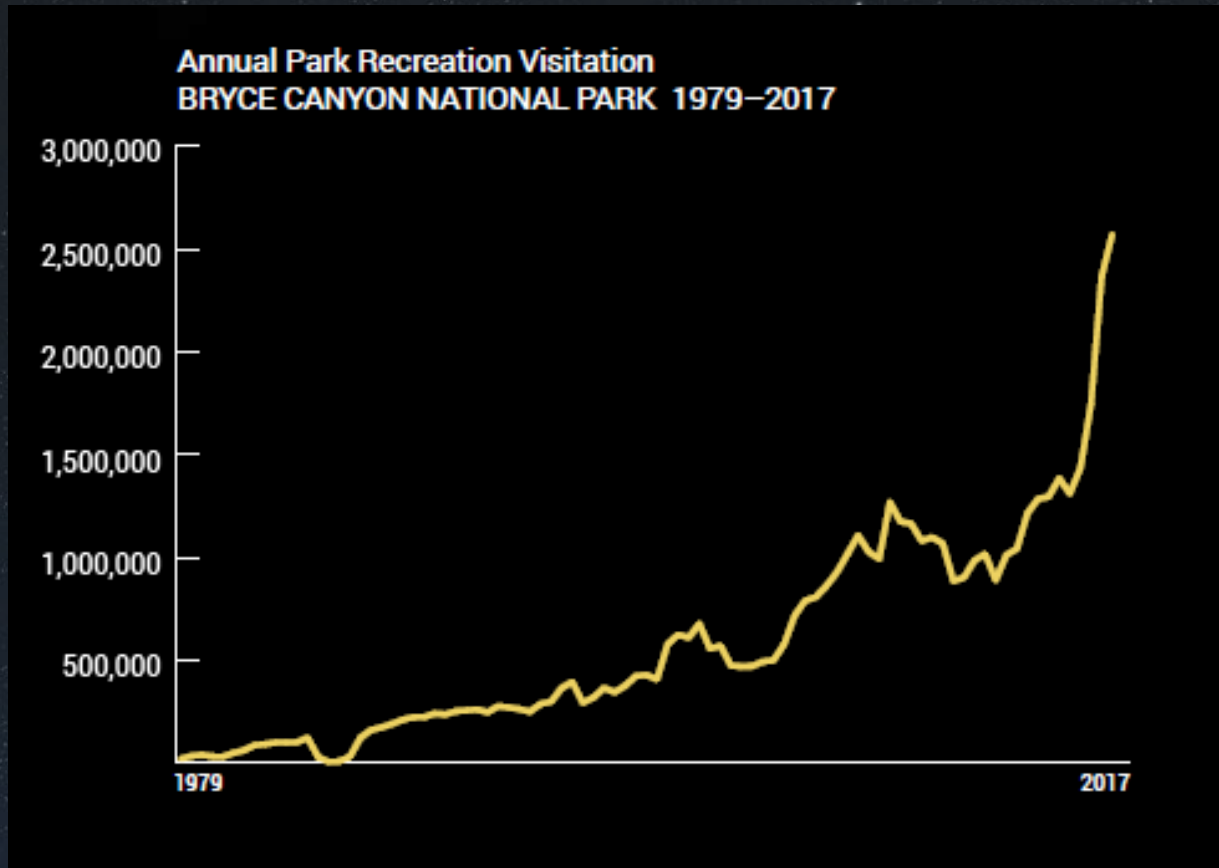
Home > Things to do > Nature & Wildlife > Stargazing

Dark, clear skies; unique celestial features and otherworldly landscapes make stargazing in New Zealand a breathtakingly magical experience.

New Zealand has five dark sky places (DSPs) currently accredited.

Visitation numbers have reportedly surged by as much as 300% in some DSPs.

Why a dark sky sanctuary



Bryce Canyon in Utah visitor numbers. They began running dedicated Astrotourism experiences in 2010.

“Having internationally recognized dark skies bolsters our ability to attract more visitors and offer more night programming which results in more people enjoying our parks at more times of the day.”

Fred Hayes, Utah State Parks Director²¹

Is there competition?



Warrumbungle Dark Sky Park, Orana, New South Wales



River Murray Dark Sky Reserve, South Australia



The Jump-Up (Australian Age of Dinosaurs) Dark Sky Sanctuary, Winton, Queensland



Arkaroola Wilderness Dark Sky Sanctuary, Flinders Ranges, South Australia



The Jump-Up
15 hour drive from Brisbane
(7 hours from Townsville)

Arkaroola Wilderness Sanctuary
8 hour drive from Adelaide

Whilst there is competition in the sector, Tasmania has proximity advantages as well as access to celestial events that cannot be matched anywhere else in the world!

A dark sky sanctuary- it makes sense

- Conservation:
 - Protects the biodiversity in the immediate area
 - Shown to impact positively on surrounding areas
- Tourism:
 - Environmental tourism- impact is low
 - Off peak and requires overnight stays in rural and regional areas
- Education
 - Awareness in Tasmania that this is special
 - Awareness this is a problem we need to address



Tasmania: A dark sky sanctuary





DARK SKY
TASMANIA

info@darkskytasmania.org

